



# SAINT CLOUD TECH HIGH SCHOOL

School Board Workshop 03.07.2018







## AGENDA

- HS Design Committee Recommendations
- Furniture Workshop Report-Out
- Purchasing Recommendations
- Construction Update



# HIGH SCHOOL DESIGN COMMITTEE RECOMMENDATIONS

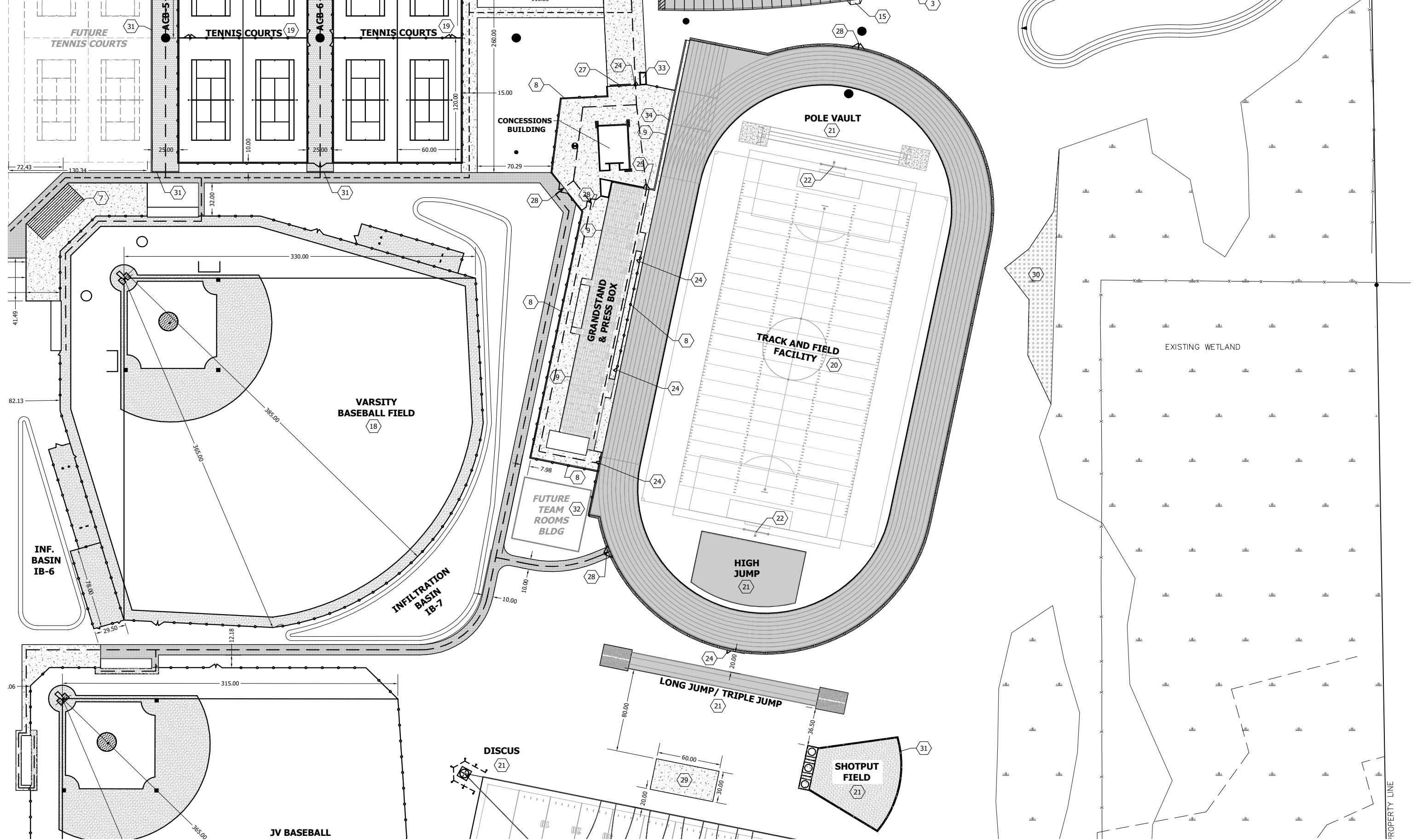






Site Aerial





Site Plan- Enlarged





Bleachers Sample Perspective



## Bleacher Recommendations Summary

### Added Entries/Exits

Add two entries/exits to the rear, less than 6' wide (ea.) \$5,290

### Enclosing Underside of Bleachers

Galvanized fence with screen \$114,350  
(placeholder in budget pending final design)

### Seating

Elite Seats



\$30/seat



# FURNITURE, FIXTURES, AND EQUIPMENT WORKSHOP





## Staff Workshop





## STAFF

- Accessibility
- Collaborative
- Flexibility
- Functional
- Safe
- Space



# Student Workshop











## Key Takeaways:

- Students and staff are concerned about security, want the space to be welcoming, open, and inviting
- Comfortable
- Balance of technology- don't need to have it all the time
- Accessibility from a variety of points: Works for a variety of people and easy to access
- Clean- as in cleanliness- is very important to the students
- Flexibility- prefer individual student desks that can be brought together
- Color and natural light
- Things that aren't confusing, and are user friendly



## Next Steps:

- Programming meetings with staff at the end of March
- Sit test in April



# Purchasing

<b>Utilizing Contracts</b>	<b>Bidding</b>
Bidding has already occurred to achieve the lowest price	Requires Bidding to achieve the same or higher pricing
Can easily involve local companies and specific dealers qualified to do the work to provide products in a timely fashion (volume)	No control over who is the lowest bid. Could also end up with too many vendors to coordinate and with vendors unable to perform due to size of project causing delays
Allows greater control to insure the Owner gets the specific product they want	Unlike building products, furniture is not designed to be exactly equal making comparables difficult to establish
Provides greater budget control since pricing is already known	Don't know if the products are in budget until after bidding is completed
Saves calendar time since bid and contract periods are eliminated	Adds calendar time to publicly bid
Fewer products from fewer companies streamlining maintenance and replacement/additions	More dealers and more products confuses maintenance and replacement/additions
Most common practice for purchasing furniture	Rarely used to purchase furniture and equipment
Still offers selection and options for Owner of different products at different price/points/quality	Hard to provide products for each bid item that are fully comparable



# CONSTRUCTION UPDATE





## NEXT STEPS

- 4/11: Board Presentation
- 5/3: HSDC Meeting





**THANK YOU**  
School Board Workshop 03.07.2017

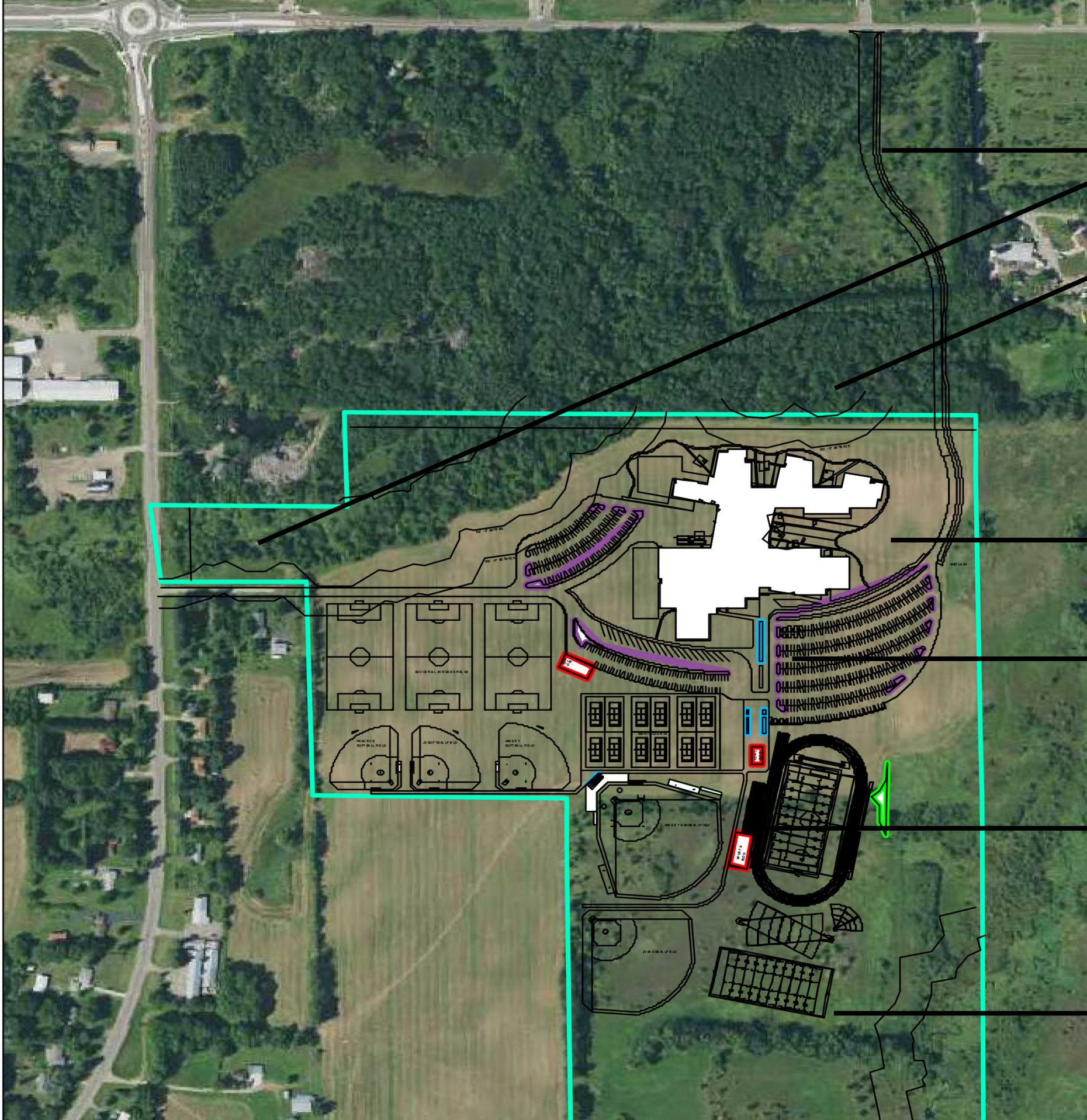




# SECURITY DESIGN REVIEW







CONSIDER: ROAD LIGHTING, WAYFINDING

NATURAL BARRIER: CREEK

CONSIDER: MOTION ACTIVATED  
EXTERIOR LIGHTING AROUND PERIMETER  
OF BUILDING

NATURAL BARRIER: RAIN GARDEN

MAINTAIN GOOD SITE LINES ACROSS  
THE SITE

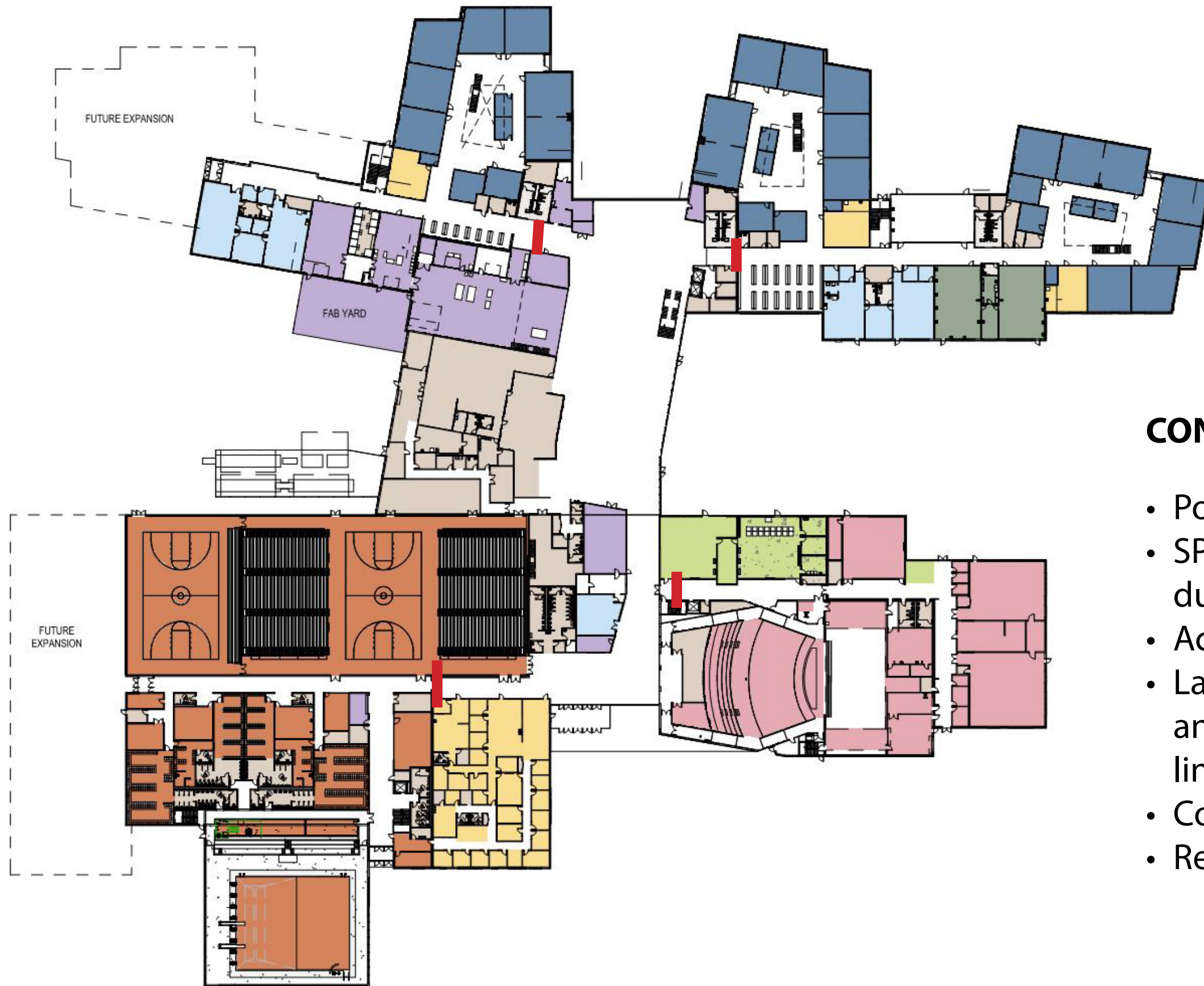
CONSIDER: SECURITY BELOW BLEACHERS

NATURAL BARRIER: RAVINE

SECURITY SITE







## CONSIDERATIONS:

- Policies, Process and Procedures
- SPED entrance and how it functions during school hours.
- Access control of all entrances
- Landscaping around building, low and maintained to provide site lines.
- Compartmentalization of school
- Reduce and secure hidden areas